



Legend: LA Planting Plan -

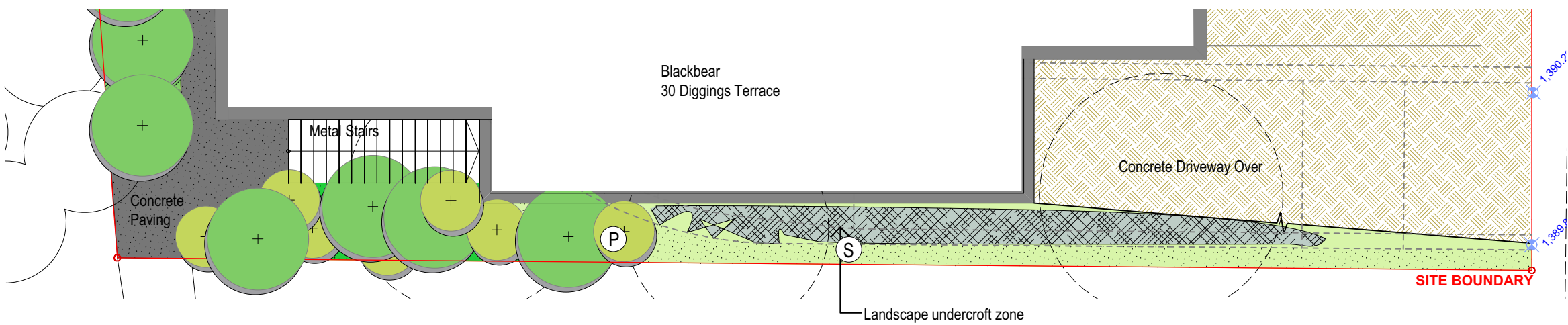
- P - Perimeter Planting - North West Boundary**
 15No. Cp - Callistemon ptyoides - shrub at 800 centres - 250mm pot
 7No. Bm - Banksia marginata - small tree at random centres - 1.8 - 2.5 metre height minimum
 - F - Feature Planting - North Facing**
 55No. Dt - Dianella tasmanica - tuft at 600 centres - 250mm pot
 14No. Ep - Eucalyptus pauciflora - medium tree at random centres - 1.8 metre height minimum
 - S - Shaded Area Planting - East & West Boundary**
 25No. Bpm - Blechnum penna-marina - delicate fern at 300-450mm centres - 150mm pot
 19No. Da - Dicksonia antarctica - tree ferns (certified) at random centres - 1.5 - 2.0 metre height
 70No. Pp - Polystichum proliferum - ground cover at 500 centres - 250mm pot
 35No. Gh - Goodenia hederaceae - ground cover at 400 centres - 250mm pot
 - E - Entry Planting - Diggings Terrace**
 3No. Bm - Banksia marginata - small tree at random centres - 1.8 - 2.5 metre height minimum
 8No. Poa Sieberiana - ground cover at 500 centres - 150mm pot
 7No. Gh - Goodenia hederaceae - ground cover at 400 centres - 250mm pot
 - R - Roof Gardens - Entry Lobby & Bin Store**
 40No. Bpm - Blechnum penna-marina - delicate fern at 300-450mm centres - 150mm pot
 12No. Poa Sieberiana - ground cover at 500 centres - 150mm pot
 30No. Dt - Dianella tasmanica - tuft at 300 centres - 250mm pot
 20No. Gh - Goodenia hederaceae - ground cover at 400 centres - 250mm pot
 - SG** Seeded grass, Alpine hybrid seeded grass mix over local top soil
- Informal Retaining Wall** - Square sawn hardwood sleeper, (Max) 900high x 270wide - Retention cloth, blue metal behind with top soil & wood chip mulch
- Concrete Paving Concrete Driveway & Footpath - Nonslip finish
- Existing trees removed (dashed circle) Existing trees retained (solid circle)

Landscaping for the Black Bear site redevelopment

- Site only to be planted in the late spring or early autumn
- Temporary tree guards are to be included in the landscape plan to protect the planting areas from unwanted grazing animals.

Issue	Date	Amendment
D	25 October 2019	Submission

Client Hidali Pty Ltd	Title LANDSCAPE CONCEPT PLAN
Project BLACK BEAR DEVELOPMENT 30 Diggings Terrace Thredbo NSW 2625	Scale 1:100 at A3 size
	LA001_D



1 LANDSCAPE UNDERCROFT PLAN
LA001

Legend: LA Planting Plan -

- P - Perimeter Planting - North West Boundary**
15No. Cp - Callistemon pityoides - shrub at 800 centres - 250mm pot
7No. Bm - Banksia marginata - small tree at random centres - 1.8 - 2.5 metre height minimum
- F - Feature Planting - North Facing**
55No. Dt - Dianella tasmanica - tuft at 600 centres - 250mm pot
14No. Ep - Eucalyptus pauciflora - medium tree at random centres - 1.8 metre height minimum
- S - Shaded Area Planting - East & West Boundary**
25No. Bpm - Blechnum penna-marina - delicate fern at 300-450mm centres - 150mm pot
19No. Da - Dicksonia antarctica - tree ferns (certified) at random centres - 1.5 - 2.0 metre height
70No. Pp - Polystichum proliferum - ground cover at 500 centres - 250mm pot
35No. Gh - Goodenia hederaceae - ground cover at 400 centres - 250mm pot
- E - Entry Planting - Diggings Terrace**
3No. Bm - Banksia marginata - small tree at random centres - 1.8 - 2.5 metre height minimum
8No. Poa Sieberiana - ground cover at 500 centres - 150mm pot
7No. Gh - Goodenia hederaceae - ground cover at 400 centres - 250mm pot
- R - Roof Gardens - Entry Lobby & Bin Store**
40No. Bpm - Blechnum penna-marina - delicate fern at 300-450mm centres - 150mm pot
12No. Poa Sieberiana - ground cover at 500 centres - 150mm pot
30No. Dt - Dianella tasmanica - tuft at 300 centres - 250mm pot
20No. Gh - Goodenia hederaceae - ground cover at 400 centres - 250mm pot
- SG** Seeded grass, Alpine hybrid seeded grass mix over local top soil
- Informal Retaining Wall** - Square sawn hardwood sleeper, (Max) 900high x 270wide - Retention cloth, blue metal behind with top soil & wood chip mulch
- Concrete Paving
- Concrete Driveway & Footpath - Nonslip finish
- Existing trees removed
- Existing trees retained

Landscaping for the Black Bear site redevelopment

- Site only to be planted in the late spring or early autumn
- Temporary tree guards are to be included in the landscape plan to protect the planting areas from unwanted grazing animals.

Client	Title	Issue	Date	Amendment
Hidali Pty Ltd	LANDSCAPE CONCEPT PLAN	A	25 October 2019	Submission
Project	Scale			
BLACK BEAR DEVELOPMENT 30 Diggings Terrace Thredbo NSW 2625	1:100 at A3 size	LA002_A		



FILE NAME: 0555 SR A3.dwg PRINTED: 5/29/2019 7:19

SITE ENVIRONMENT MANAGEMENT PLAN NOTES:

- Indicative temporary site protection fencing to contain extent of disturbance during construction approved by KT & NPWS indicated on SEMP.
- Remove identified weeds within the construction site area before commencement of revegetation works

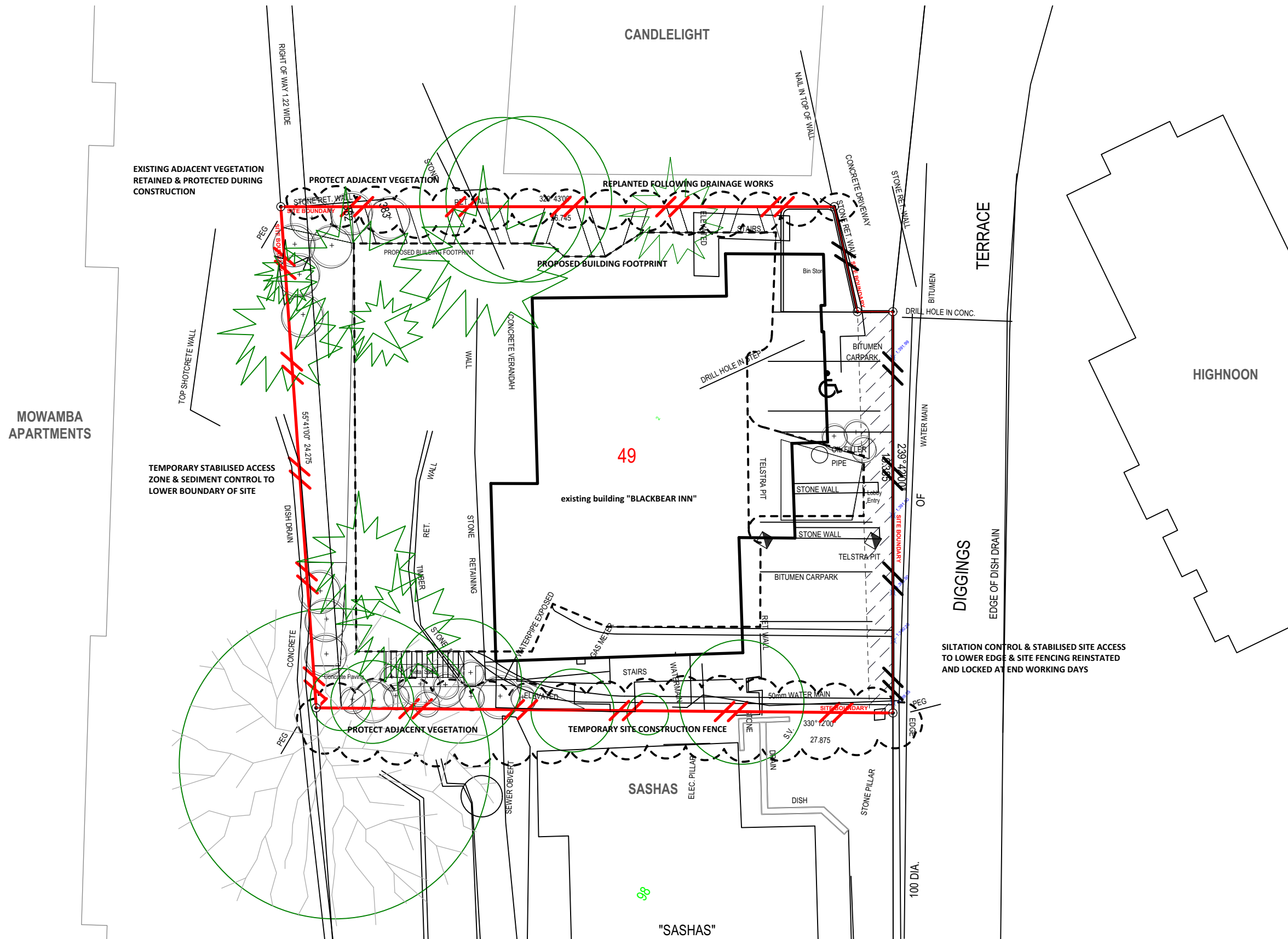
SITE PROTECTION & REVEGETATION WORKS TO BE IN ACCORDANCE WITH REHABILITATION GUIDELINES FOR THE RESORT AREAS OF KOSCIUSKO NATIONAL PARK AUG 07 & NSW DEPT HOUSING BLUE BOOK MAINTAINING URBAN STORMWATER SOIL & CONSTRUCTION

SITE COMPOUND & CONSTRUCTION FENCING

- Site compound will be established in consultation with Kosciuszko Thredbo Pty Ltd adjacent to the recycling shed compound at Friday flat car park.
- The site compound shall not be within any trafficable ways.
- Once the construction is underway, the site shed and lunchroom will be constructed and located within the carpark level onsite
- De-housed material will be trucked to the Jindabyne landfill depot.
- Fencing will be installed along Diggings terrace and comply with AS 4687 Temporary fencing and hoardings.

EROSION, SEDIMENT CONTROL AND SPOIL MANAGEMENT

- Appropriate control and measure will be in place during construction to prevent or control erosion, and to capture and contain any sediment to prevent it leaving the construction site.
- Disturbance area will be minimised and clearly demarcated.
- Works will only be conducted within the works zone. Vehicle movements will be restricted to the defined roads/tracks.
- Where possible, works area will be designed to ensure stormwater runoff drains into the site.
- Where runoff from the site is required, it will be via the longest flow path possible to ensure maximise sediment retention.
- Flows to undisturbed areas will be prioritised.
- Where required, sediment controls will be put in place. These will include, but not be limited to, rock check dams, sediment basins, sediment fences and silt socks.
- Sediment controls will be reviewed during site inspections and/or after significant rainfall (more than 10mm in 24hrs resulting in site runoff).



MOWAMBA APARTMENTS

CANDLELIGHT

49

existing building "BLACKBEAR INN"

TERRACE

HIGHNOON

DIGGINGS

SASHAS

"SASHAS"

Issue Date Amendment
 B 25 October 2019 SUBMISSION

Prepared by BELLEVARDE CONSTRUCTION

Client
 Hidali Pty Ltd

Title
 SITE ENVIRONMENT
 MANAGEMENT PLAN

Project
 BLACK BEAR DEVELOPMENT
 30 Diggings Terrace Thredbo NSW 2625

Scale
 1:200 at A3 size **semp_001_B**

